
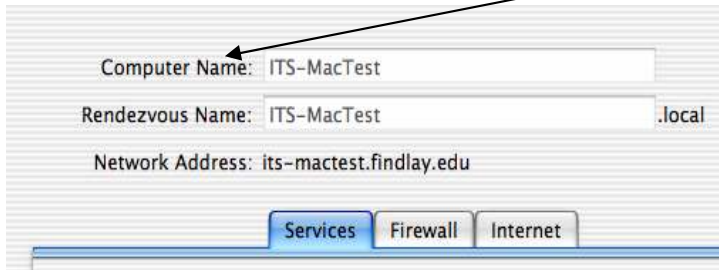



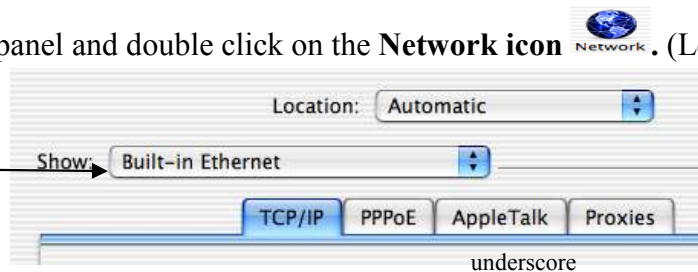
Connecting To An Apple Computer Using a PC in a Technically Enhanced Classroom or Computer Lab

Configuring your Apple Computer to use OSXvnc Server:

1. Under OS X, Go to the Apple and down to **System Preferences**.
2. After going to **System Preferences**, double click on the **Sharing Folder**  located under the **Internet & Network** bar.
3. Once inside the **Sharing Folder** and write down your **Computer Name**. You will need this for future reference.



4. Go back to your **System Preferences** panel and double click on the **Network icon** . (Located under Internet & Network). Make sure where it says **Show:** that **Built-in Ethernet** is selected.




5. Next, go to the website http://www.apple.com/downloads/macosx/networking_security/osxvnc.html and download **OSXVNC**. Go to either link on the page that say **350K**, this will take you to an area to download the software. Once there, find a site in North America and click on notepaper icon beside the 367kb to begin downloading. Make sure to save the download to your desktop so it can be found easily.

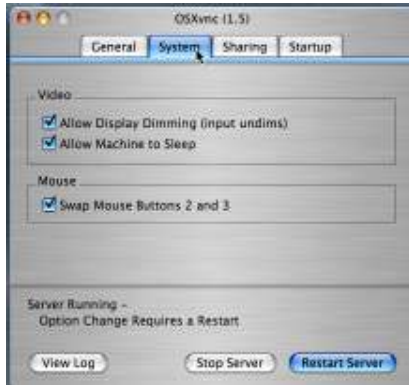
Download Details	
Company:	Redstone Software
Version:	1.5
Post Date:	02/02/05
License:	Freeware
File Size:	350K

6. Double click on the icon entitled **osxvnc1.5.dmg** and install the OSCXVNC software. Once installed you will get an icon on your desktop that looks like



this: . Double click on the **OSXvnc** icon. (The OSXvnc Server must be started before you will be able to connect to your Mac from a PC.

- When you double click on the OSXvnc icon it will automatically fill in some information for you. Under the **General** tab make sure the **Display Number** is set to **0**, **Port** should be **5900** and for the **Password**, you will need to create a password you can remember (any password is fine). The Display Name should be the name you found under Computer Name in the Sharing Folder of the System Preferences menu. (See step 3)



- Under the **System** tab, check the options you would like allowed. If you want your Mac to be able to go into sleep mode and still be able to access the computer, you will need to check the **Allow Machine to Sleep**. **Allow Display Dimming** and **Swap Mouse Buttons 2 and 3** should also be checked.

- Under the **Sharing** tab check the **Never share display between clients**. This way only one person can connect to your computer. All the other items can be unmarked.



- Under the **Startup** tab it is recommended that you not check the **Start Server When Application Launches**. It is recommended that you manually begin the server before you plan on using it. The **Restart Server** if it terminates unexpectedly should be checked.

- This is all the setup for OSXvnc. Once you click the **Start Server** towards the bottom of any tab you will be ready to begin the PC for configuration so you can access the Mac. Remember whenever you make a change to the OSXvnc set up you will need to click on the **Start Server** button to begin the application again.

Configuring the PC for VNC (to Connect to the Apple Computer Running the OSXvnc Server)

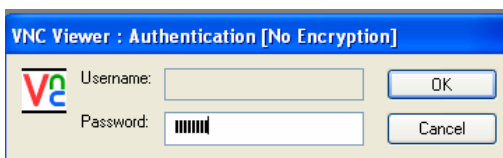
1. If you are in a lab or a Technically Enhanced classroom or computer lab, go to **Start/ Programs/Accessories/ Communications/VNC Viewer 4.0. (Go to Step 4)**
2. If you are at another PC you will need to go to <http://www.realvnc.com/download.html> . At the website go to **Free Edition** and click on **Download** at the bottom of the column. At the next screen go to the column under **Installable packages** and put a check beside **Windows 9x/2000/NT/XP**. Then click on the **Proceed to download** button.



3. On the next screen scroll to the bottom of the screen under **Download Area** and click on the **executable link for x86 Win 32 viewer program only**. Proceed with the download by clicking the **Save** button and save it to your desktop (or where you can find it easily).



4. Double click on the **VNC** icon. It will look like this:
5. After you double click on the **VNC Viewer** you will get this screen: at the **Server:** type in your **Mac's computer name or IP address** (i.e: "ITS-MacTest" which is the computer name of the Mac I'm connecting to.) Click **OK**.



6. After clicking **OK**, if it finds the Server name correctly, you will be prompted to type in your **Password** (this is the password that you created when you set up your OSXvnc connection on your Mac.) Click **OK**

7. You should now be successfully connected to your Mac computer from your PC.


USING REMOTE DESKTOP TO CONNECT TO YOUR PC (Windows XP) FROM A MAC

1. On your Apple computer, Go to the website:
http://www.apple.com/downloads/macosx/networking_security/remotedesktopconnectionclient.html
2. From this site click on the link in blue that says File Size: **1.4MB**
3. On the next page click on the link that says **Download Now** and download to your desktop (or other place that is easy to find).

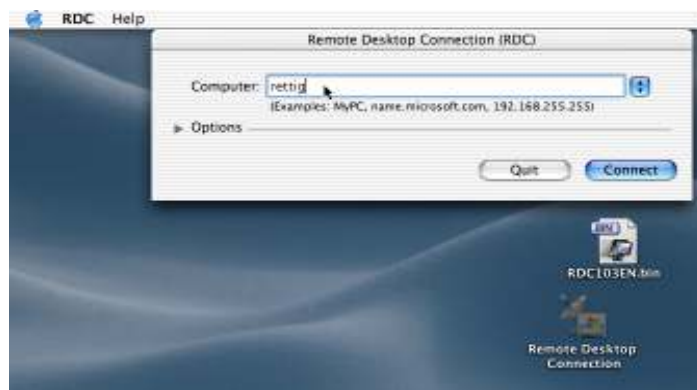
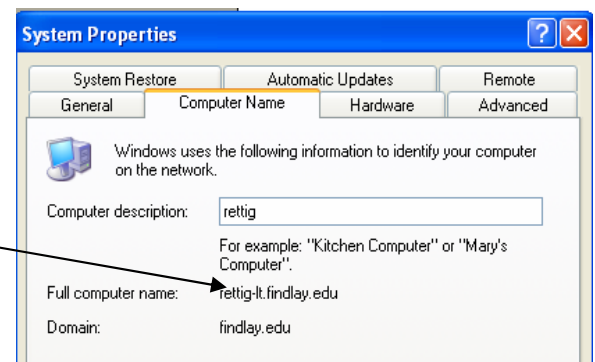


4. Double click on the icon RDC103EN.bin
5. Once you double click the software will use the appropriate application (i.e.: Stuff-it Expander, etc.) and will create an icon named **Remote Desktop Connection**. Double click on the **Remote Desktop Connection** icon.



6. Then double click on **Remote Desktop Connection** icon located inside the folder . For future use you can drag this icon to your desktop or taskbar. The first time you use this, you will need to accept the terms and choose to register or register later.

7. At the first menu, you will need to type in your PC name (i.e.: rettig-PC). You can find this by going to your PC, right clicking on **My Computer** and going to **Properties** and click on the **Computer Name** tab. The computer name you want is located beside where it says **Full Computer Name**.



8. You will type in the fullname@findlay.edu in the box located beside **Computer** on the Remote Desktop screen on your Apple computer.

9. Once you click the **Connect** button it will connect you to the PC you are wanting to work on (please note that your PC will become locked at your desk and anyone working on your computer will be kicked out of their session).
10. After it is connected you will need to sign in as usual to your PC using your findlay.edu account information.